

SHOWER
1006 01.15

SFA



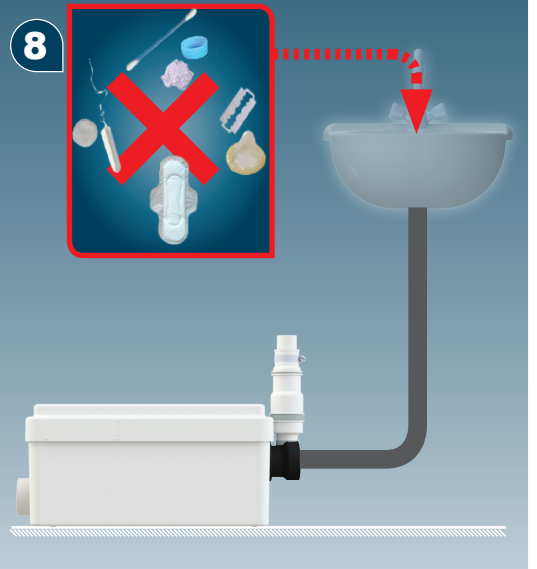
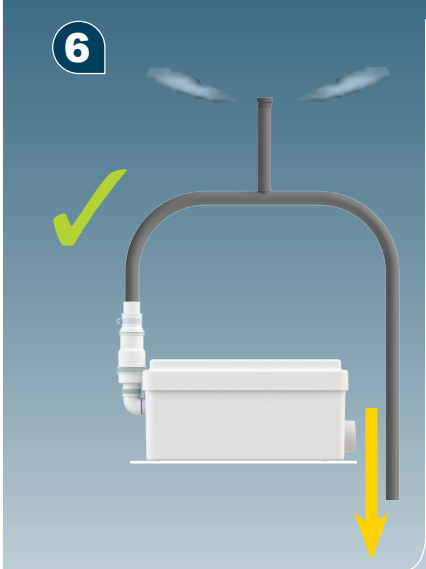
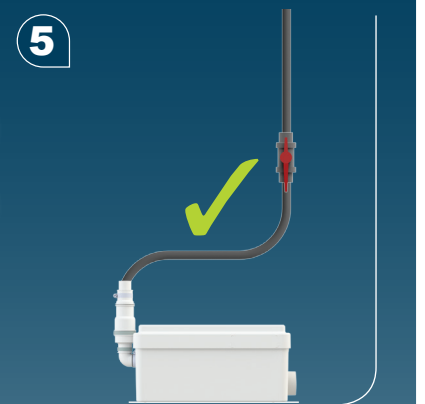
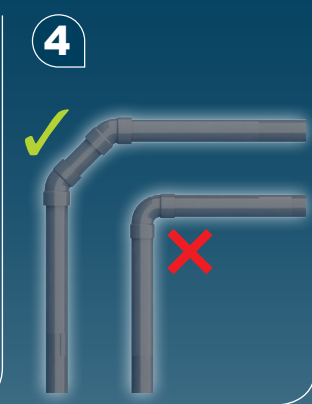
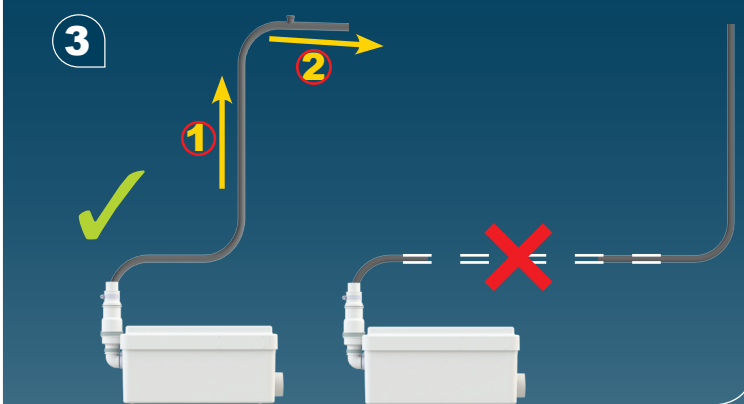
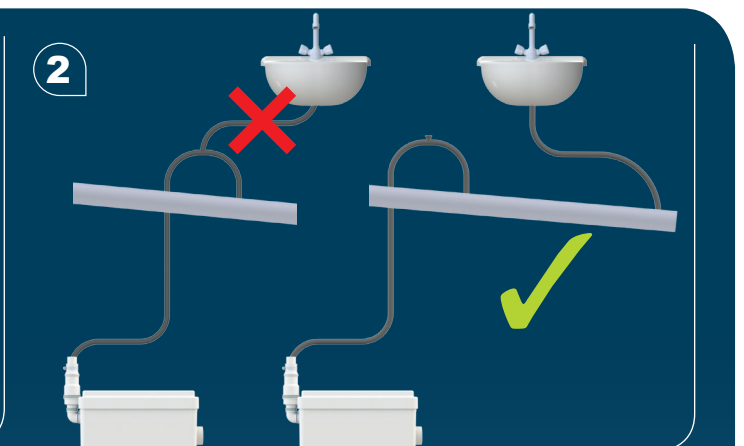
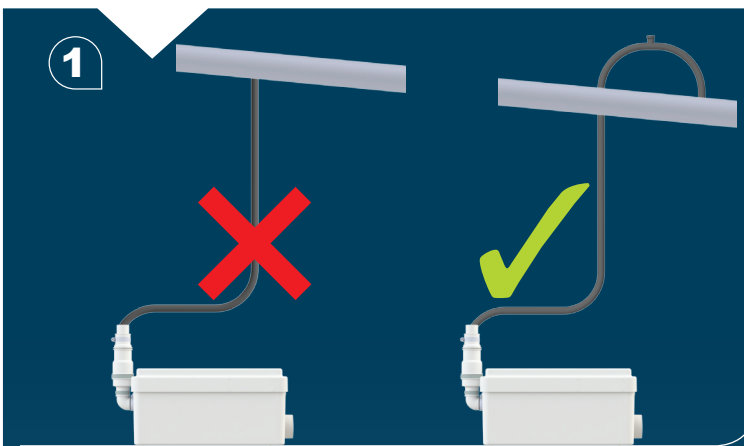
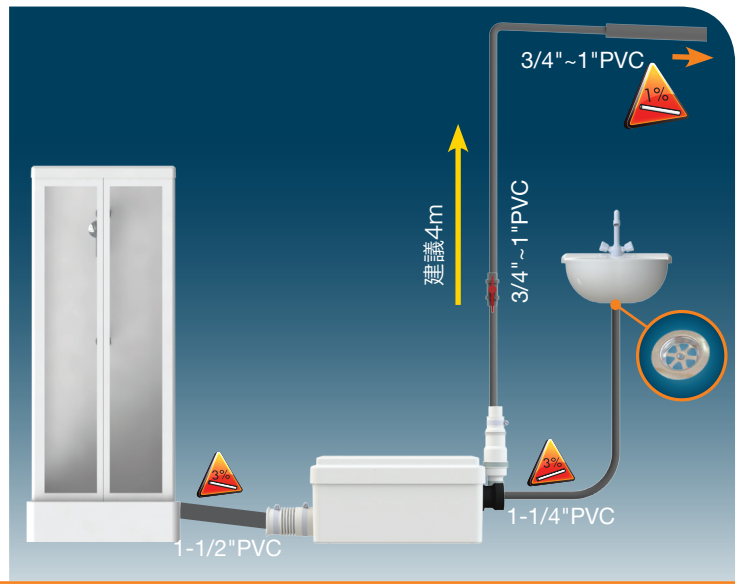
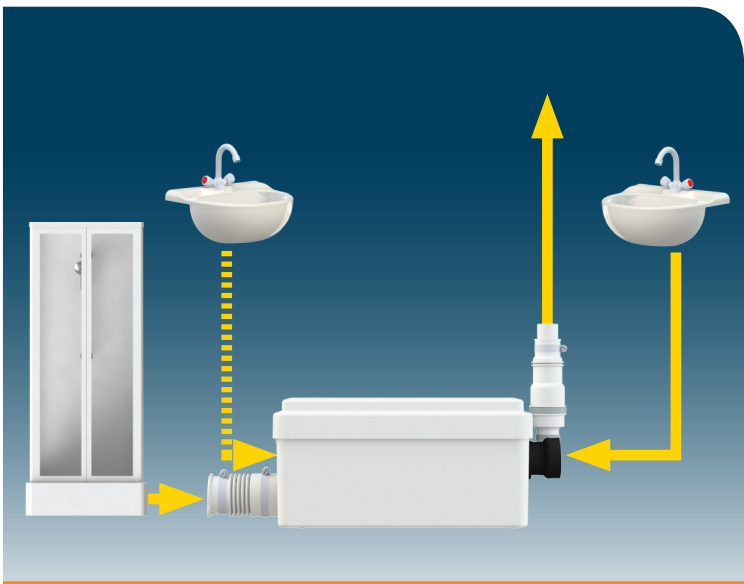
SANIDOUUCHE®

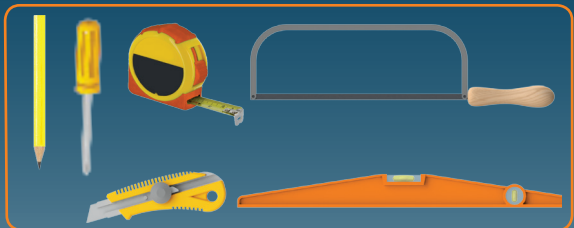
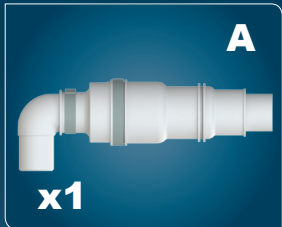
SANISHOWER®

SANIPUMP®

升利灑

安裝說明

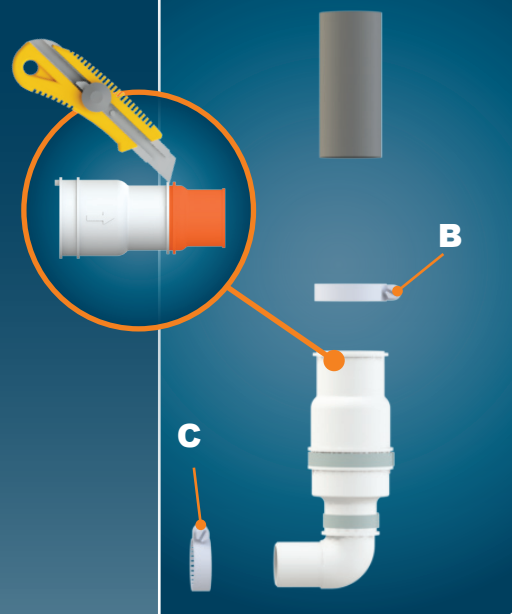
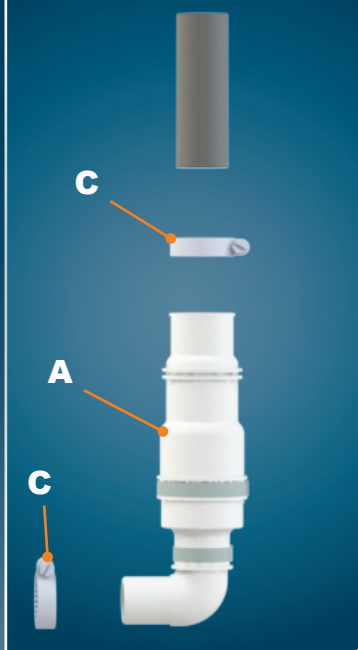
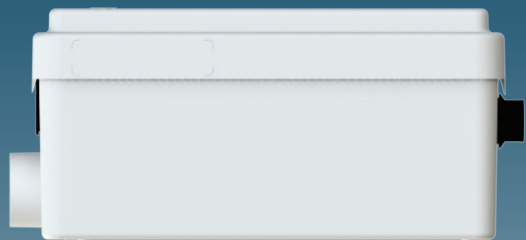




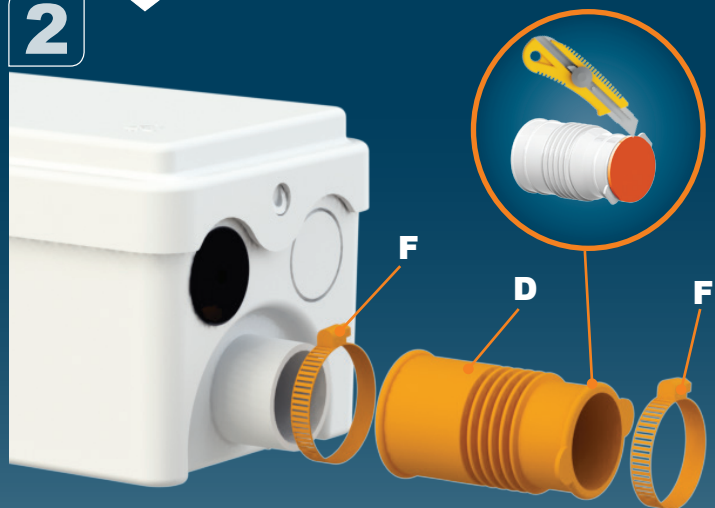
1

28mm = 3/4" PVC

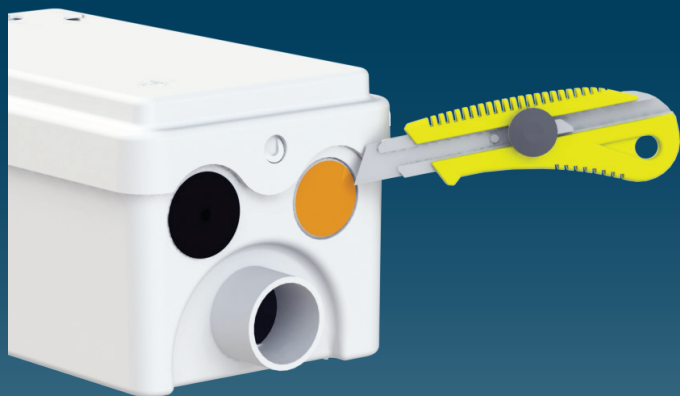
32mm = 1" PVC



2



3

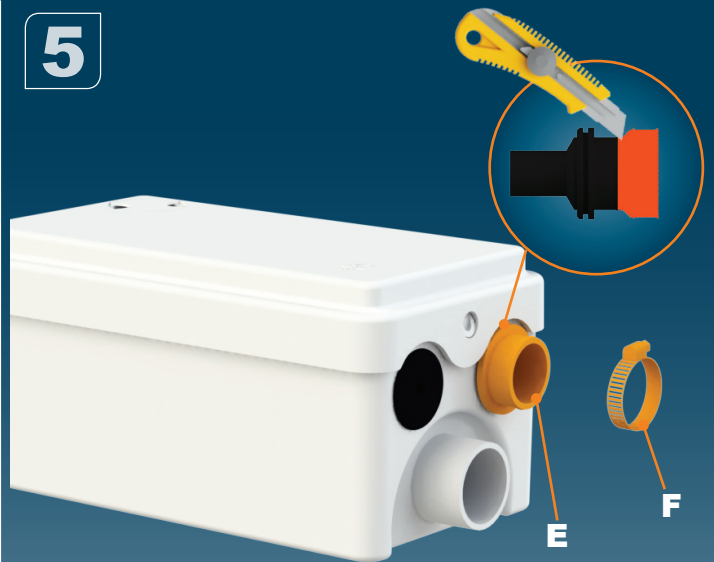


4



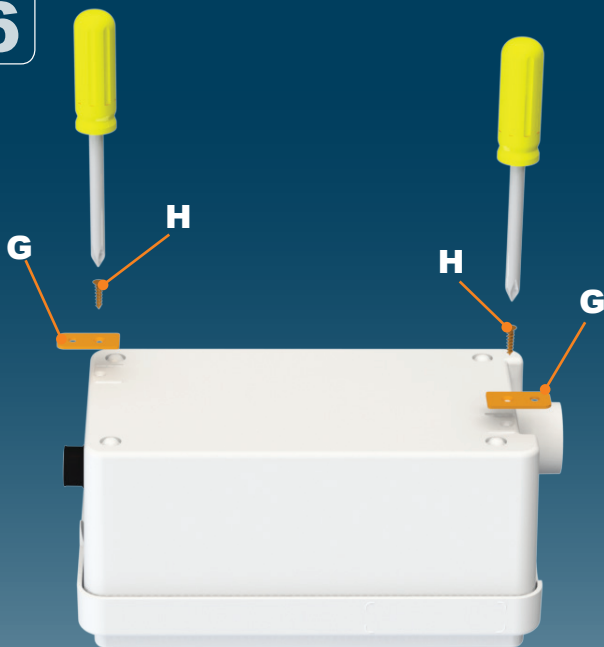
1-1/4" PVC

5



切除前段後,可連接1" PVC 入水

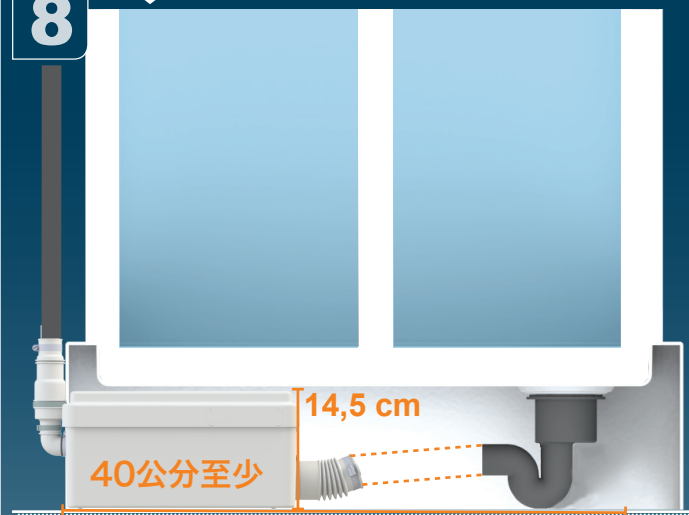
6



7

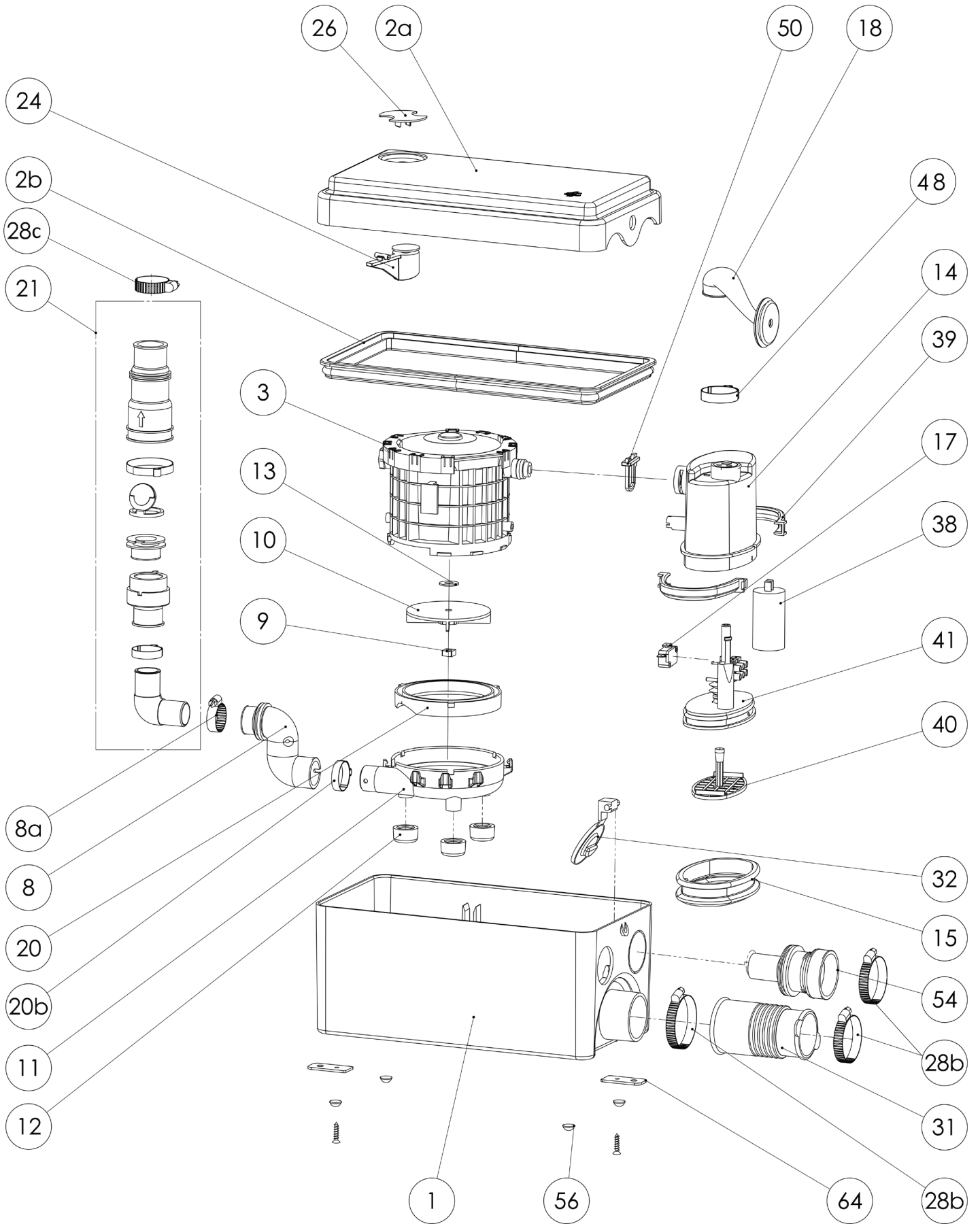


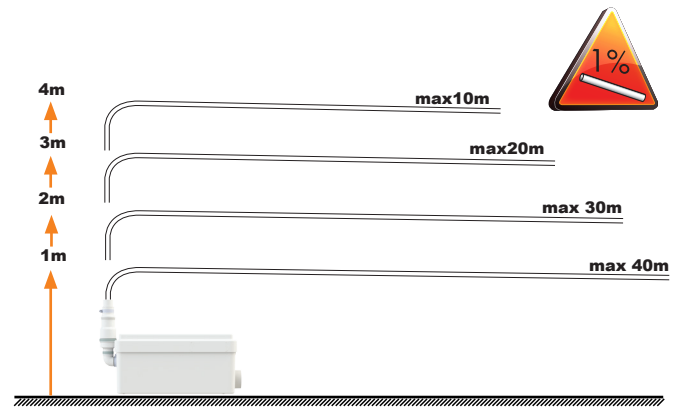
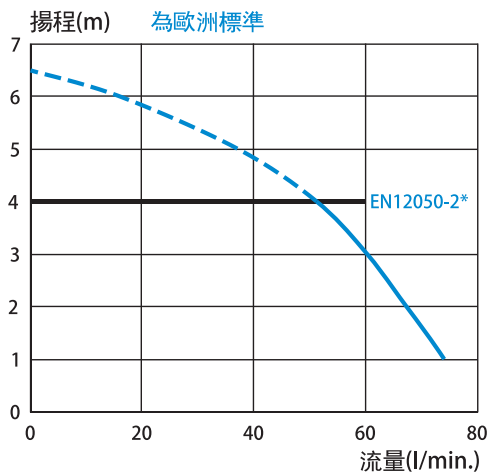
8



9

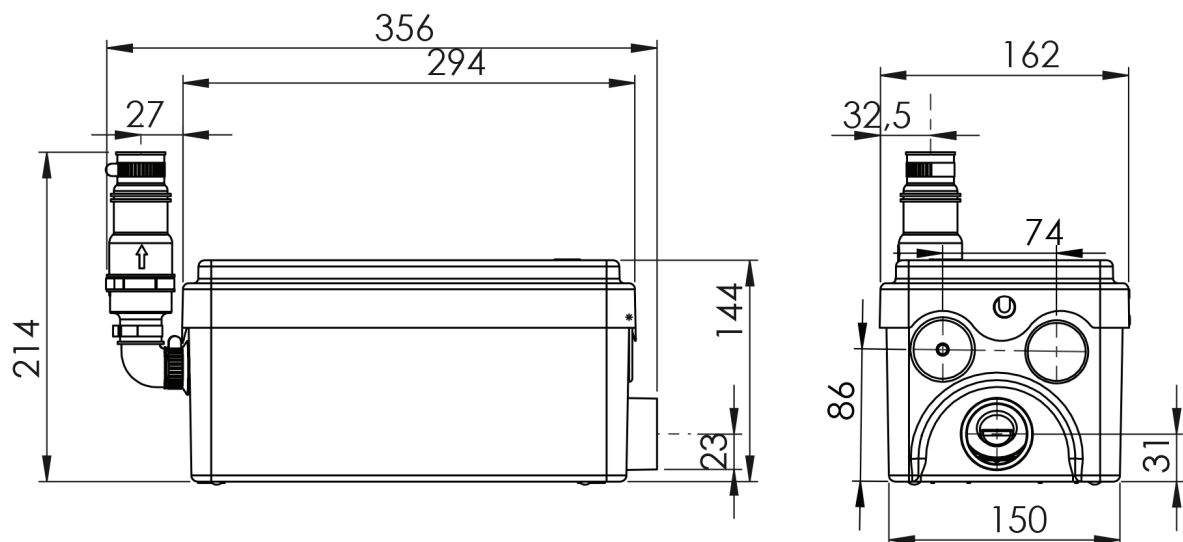






SANIDOUCHE
SANISHOWER
SANIPUMP
升利灑

110 V - 60 Hz
400 W - 1,3 A - IP44 -
⊕ (class 1) - **3,5 KG**



SFA國際集團唯一授權台灣區總代理
尚德衛浴有限公司
<http://www.sfa.tw>